



Interagency Remote Sensing Coordination Cell Overview - Goals - Objectives



Subcommittee for Disaster Reduction
June 6, 2013



USDA
FEDERAL EMERGENCY MANAGEMENT AGENCY
U.S. DEPARTMENT OF HOMELAND SECURITY

Homeland Security

Purpose

- Coordinate, synchronize, collaborate on, and track remote sensing collection activities and capabilities
- Ensure information needs of first responders, state emergency managers, and federal agencies are established and addressed during Stafford and non-Stafford Act scenarios
- Improves federal coordination of remote sensing requirements and capabilities in response to natural and man-made disasters
- Conducts coordination of remotely-sensed data collection, analysis, and dissemination in support of a lead federal agency (LFA) (e.g. FEMA)
- Create a virtual community of interest to facilitate situational awareness and share remote sensing data at the federal, state and local levels
- Improve the governance of federal remote sensing operations by minimizing duplication of effort, unnecessary tasking, and by reducing operational costs



The IRSCC operational activities:

Hurricanes: 2008 Gustav, Hannah, and Ike; 2010 Earl; 2011 Irene

Fires: 2008 and 2009 California

Floods: 2008, 2009, 2010, 2011 Midwest and Southeast flooding and severe weather

Earthquakes: Haiti 2010; Japan 2011

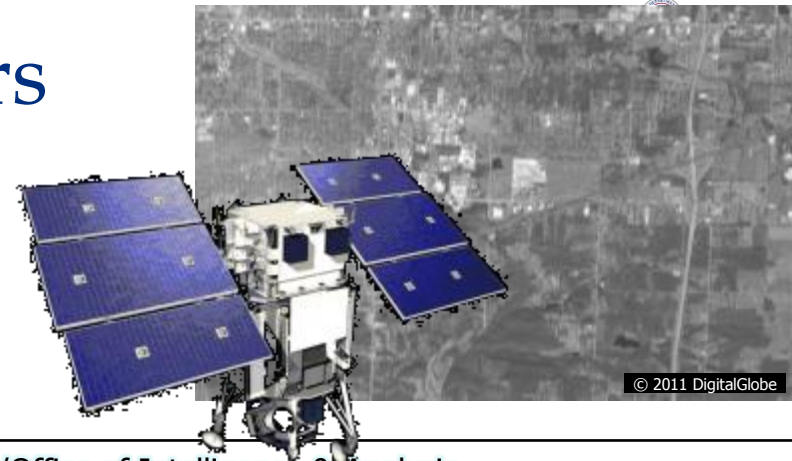
Tsunami: American Samoa 2009; Hawaii and West Coast 2011

National Special Security Events: 2009 Presidential Inauguration; 2010 Nuclear Security Summit; 2011 State of the Union Address; 2012 State of the Union Address

Special Event Assessment Rating: 2011 Super Bowl; 2011 United Nations General Assembly; 2012 Rose Bowl; 2012 Super Bowl

Spills of National Significance: Deepwater Horizon 2010

Members



- Agencies with...
 - Homeland security authorities
 - Tasking and collection authorities
 - Collection management resources and authorities
 - Data storage facilities
 - Dissemination capabilities
- Agencies that...
 - Provide Geospatial Information System (GIS), imagery analysis, or data storage resources
 - Control, have tasking authority over, or possess airborne or space-based platforms and sensors

- DHS/Office of Intelligence & Analysis
- DHS/Federal Emergency Management Agency
- DHS/Office of Operations Coordination and Planning
- National Guard Bureau
- Civil Air Patrol
- U.S. Geological Survey
- National Oceanic & Atmospheric Administration
- Environmental Protection Agency
- National Geospatial-Intelligence Agency
- DHS/Customs & Border Protection
- DHS/National Protection and Programs Directorate
- National Aeronautics & Space Administration
- U.S. Department of Agriculture
- U.S. Northern Command
- U.S. Coast Guard
- DHS/Geospatial Management Office
- U.S. Army Corps of Engineers
- National Reconnaissance Office

IRSCC Original Concept



- ▶ IRSCC Activated by a Federal Agency – IRSCC Assumes Responsibility for Overall Mission Management
- ▶ Centralized Collection, Validation and Prioritization of Remote Sensing Requirements
- ▶ IRSCC Manages Interagency Collaboration to Ensure De-confliction of Requirements and Elimination of Duplication of Coverage

IRSCC Current Concept



- ▶ IRSCC Remains Active – Members Report Individual Activities and Issue Requests for Assistance or Information on Other Members as Required
- ▶ Homeland Security Missions Contact the IRSCC to Determine if a Member Intends to Respond to an Incident
- ▶ Centralized Reporting of Member Activity
- ▶ IRSCC Provides Technical Support and Expertise as needed to Federal Agencies or Homeland Security Partners
- ▶ IRSCC Promotes Capabilities to Ensure Remote Sensing Data is Available by the Most Efficient Means.

Current Goals of the IRSCC

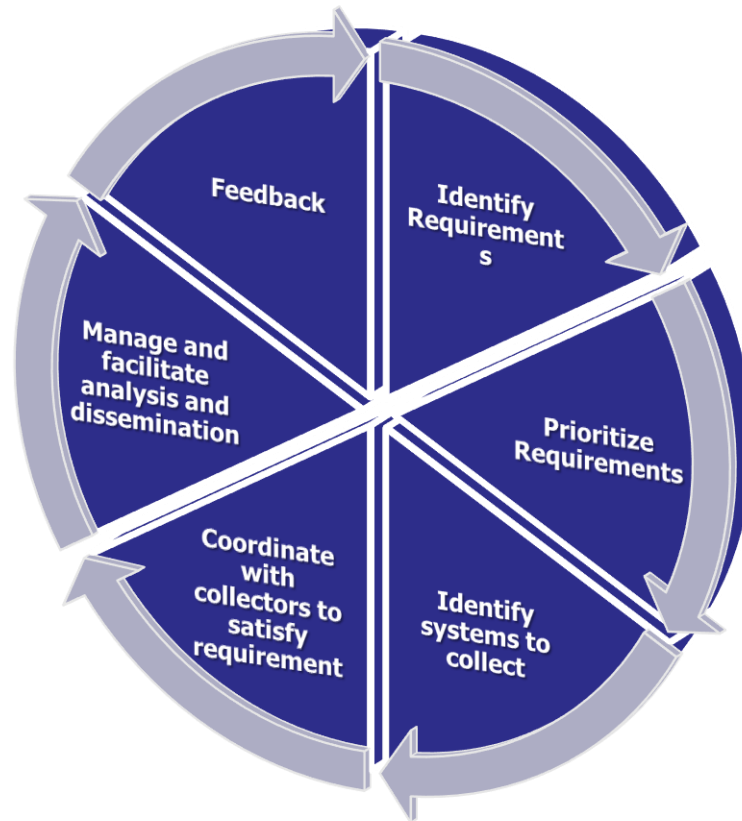


- ▶ Collaborative sharing of information for all types of incidents
- ▶ Seamless IRSCC member reporting on remotely sensed collected data to support homeland security missions
- ▶ Development of interoperable data sharing between IRSCC member partners
- ▶ Coordination of interagency remote sensing requirements and capabilities in response to natural and manmade disasters
- ▶ Provision of subject matter expertise on emerging technologies and capabilities that may benefit federal mission owners.

Collection Management



- Collection Requirements Management
 - Defining systems to employ to collect information required
 - Matching new collection requirements against existing collection/collection plans
 - Translating information requirements into collection and exploitation requirements with specific essential elements of information (EEI)
- Collection Operations Management
 - Collecting, or satisfying, information required
 - Coordinating airborne and space-based collection to avoid duplication or conflict
- Processing, Exploitation, and Dissemination (PED) management
 - Defining the systems and architectures to down-link collected information
 - Facilitating analysis of information collected
 - Defining and ensuring how information is disseminated



HSIN Interagency Remote Sensing Coordination Cell

Site Settings Membership Advanced Search Help
Today is Wednesday, January 1

Home Collaboration/Connect Current Operations Geospace Plans Request for Information Executive Committee Virtual Situation Room

Mod#

Announcements

There are currently no active announcements. To add a new announcement, click "Add new announcement" below.

▣ Add new announcement

Documents of Interest


Type	Name	Modified By
	IRSCC Contacts	Byron Cody
	Briefs	Christopher Vaughan1
	August 2011 Hurricane Irene	Byron Cody
	Joplin Missouri Tornado	Matthew Long
	National Level Exercise 2011	Matthew Long
	2011 SE Region Severe Weather	Matthew Long
	Lower Midwest Flooding Spring 2011	Byron Cody
	Daily Situation Brief	Byron Cody
	Spring 2011 Northern Plains Flooding	Byron Cody
	Google Earth Keyhole Markup Files	Byron Cody
	March 2011 Japan Earthquake and Related Events	Byron Cody

▣ Add new document

Links

- ▣ All Partners Access Network
- ▣ UN-SPIDER Knowledge Portal
- ▣ GeoEye EyeQ
- ▣ National Weather Service Pacific Tsunami Warning Center
- ▣ National Geospatial-Intelligence Agency Web-based Access and Retrieval Portal (WARP)
- ▣ United States Geological Survey Hazards Data Distribution Service
- ▣ GEOINT Online
- ▣ <https://palanterra.nga.mil/>
- ▣ NASA MODIS Near-Real-Time Imagery - Lower Mississippi (USA7)
- ▣ NASA MODIS Near-Real-Time Imagery - Upper Mississippi (USA7)
- ▣ Irene 2001 Intellipedia page

▣ Add new link



▣ <https://government.hsin.gov/sites/EmergencyManagement/IRSCC/default.aspx>

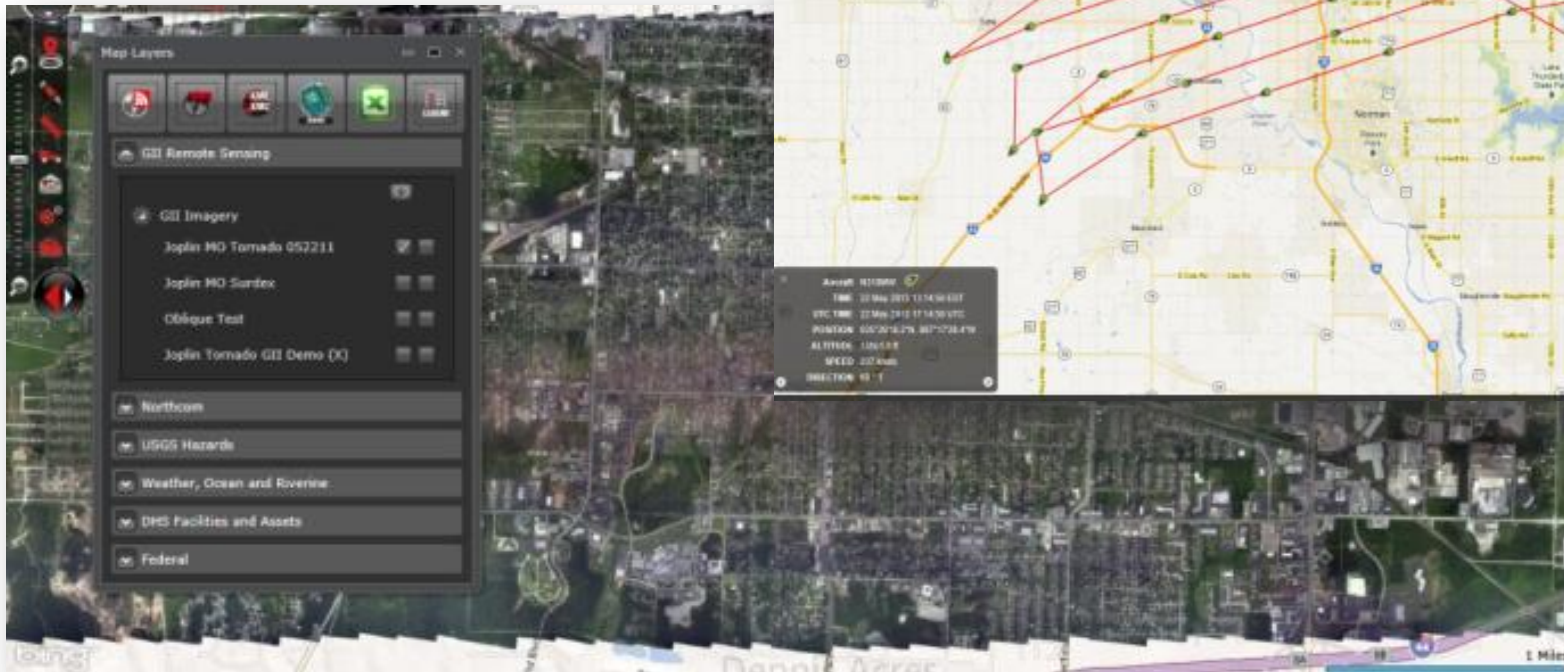
▣ To request access, send e-mail to: IRSCC@hq.dhs.gov



Web Service Delivery of Information



- ▶ IRSCC Members Publish Web Services to Access Imagery and Related Products.
- ▶ IRSCC Members Connect Their Individual Systems for Rapid Access



Remote Sensing Resources - USGS

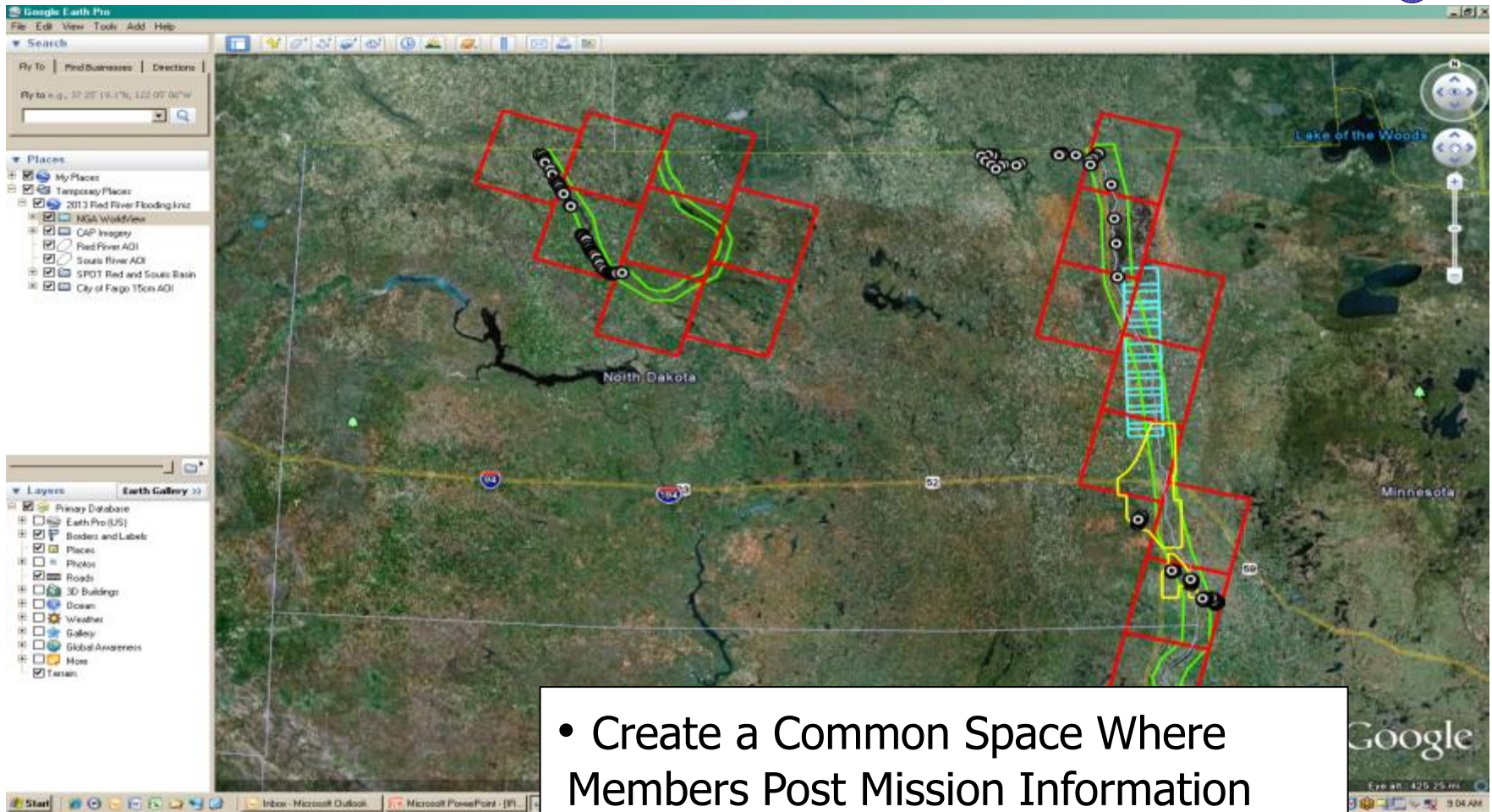


<http://hdds.usgs.gov/hdds2/>

ID	Acquisition Date	Platform	Sensor	Agency	File Format
AED040_21820W073_900402013120600000000L00	2013-12-06	AERIAL	NOIDA_D80	CAP	TIFF
AED040_21820W073_900402013120600000000L00	2013-12-06	AERIAL	NOIDA_D80	CAP	TIFF
AED040_21820W073_900402013120600000000L00	2013-12-06	AERIAL	NOIDA_D80	CAP	TIFF
AED040_21820W073_900402013120600000000L00	2013-12-06	AERIAL	NOIDA_D80	CAP	TIFF
AED040_21820W073_900402013120600000000L00	2013-12-06	AERIAL	NOIDA_D80	CAP	TIFF
AED040_21820W073_900402013120600000000L00	2013-12-06	AERIAL	NOIDA_D80	CAP	TIFF
AED040_21820W073_900402013120600000000L00	2013-12-06	AERIAL	NOIDA_D80	CAP	TIFF
AED040_21820W073_900402013120600000000L00	2013-12-06	AERIAL	NOIDA_D80	CAP	TIFF
AED040_21820W073_900402013120600000000L00	2013-12-06	AERIAL	NOIDA_D80	CAP	TIFF
AED040_21820W073_900402013120600000000L00	2013-12-06	AERIAL	NOIDA_D80	CAP	TIFF

Property	Value
Entity ID	AED040_20R370W073_900402013120600000000L00
Product Name ID	SL_100R20_D80_0000
Event	201312_001000_0000
Path ID	201312_001000_0000_CAP_AERIAL_000_001002100
Agency	CAP
Product	CAP_00
Platform	AERIAL
Sensor	NOIDA_D80
Swath Edge	000
Process Speed	00000001
File Format	TIFF
Product ID	0001000000
Acquisition Path	2013-12-06
Foot Size	5/5
File Per Pixel	0
Number of Bands	3
Pixel	5
Green Swath (MIB)	00000000
Center Latitude	-40.300078
Center Longitude	-12.000000
Swathline Version	0.0.1
Acquisition Time	2013-12-06

Member Collaborative Reporting



- Create a Common Space Where Members Post Mission Information
- Access to Member Web Services
- Automatic Update Notification

IRSCC Executive Secretariat



- ▶ Serve as the Coordinator for Members While Information Sharing Capabilities are Developed.
- ▶ Provides a Single Access Point to IRSCC Members
- ▶ Helps to Facilitate Collaboration and Communication Between Members

IRSCC and Governance



- ▶ Participate in After-Action Reviews in Order to Refine Individual Member Capabilities
- ▶ Address Issues of Data Release and Sharing – What is Sensitive and What is Publicly Releasable
- ▶ How are Alerts and Notifications Promoted from Local to State to Federal

IRSCC Way Ahead



- ▶ Complete implementation of the IRSCC functional re-organization as proposed at May 2012 IRSCC Executive Committee and approved at February 2013 IRSCC Executive Committee
 - Focus on active participation of members based on specific mission and authorities
 - Expansion of IRSCC co-chairmanship to include DoD and OGA at the head of the table along with DHS
 - Revision of CONOPs and SOP
- ▶ Participate in homeland security governance groups (such as SDR)
- ▶ Promote the increased use of remote sensing as an essential part of situational awareness and mission support